

Ask Your Provider if a Heartflow FFR_{CT} Analysis is Right for You

The safety and effectiveness of FFR_{CT} Analysis has not been evaluated for all patient populations and conditions and may not be appropriate for certain patients. The FFR_{CT} Analysis process is dependent on the quality of the imaging data provided by the ordering physician, such that FFR_{CT} Analysis may not be available or effective for use with certain CT images. If your physician suspects coronary artery disease and orders a Coronary CT scan, your doctor may decide that you are eligible for an FFR_{CT} Analysis. While no diagnostic test is perfect, FFR_{CT} has demonstrated better accuracy compared to other non-invasive cardiac tests.³

Insurance Coverage of Heartflow FFR_{CT} Analysis

FFR_{CT} Analysis is covered by Medicare across and most commercial insurers, for eligible patients. Your insurance coverage, specific plan benefits and the type of facility you visit will determine if you owe anything for the test. To verify coverage by your plan, ask your doctor's office or your insurance provider.

1. Heart Disease Facts. CDC. Accessed December 18, 2024. <https://www.cdc.gov/heartdisease/data-research/facts-stats/index.html>
2. Heart Attack. CDC. Accessed December 18, 2024. <https://www.cdc.gov/heart-disease/about/heart-attack.html>
3. Driessen, et al. J Am Coll Cardiol 2019; Norgaard, et al, Euro J Radiol 2015.
4. Gulati M, et al. Circulation. 2021. doi: 10.1161/CIR.0000000000001029

Heartflow Inc.

331 E Evelyn Ave, Mountain View, CA 94041
info@heartflow.com | heartflow.com



“There’s no doubt in my mind that Heartflow Analysis saved my life. I feel like I’m 30 years old again.”

– Dennis, FFR_{CT} Patient



Scan to Hear
Dennis' Story

Know Your Heart

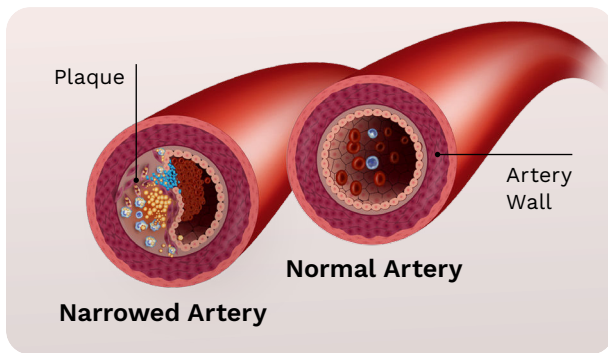
Get More Clarity with
Heartflow FFR_{CT} Analysis



If You're Experiencing Symptoms of Coronary Artery Disease, You May Be A Candidate for Heartflow FFR_{CT} Analysis

Coronary Artery Disease (CAD) is the most common type of heart disease and the leading cause of heart attacks.^{1,2} It occurs when plaque builds up in the coronary arteries, potentially restricting blood flow to the heart. This can result in chest pain or even lead to a heart attack.

The symptoms of CAD may vary in frequency and in how they present between individuals.



Coronary Artery Disease Most Commonly Presents with the Following Symptoms

- Chest pain or pressure
- Shortness of breath
- Pain or discomfort in one or both arms
- Lightheadedness, nausea or a cold sweat

Accurate, non-invasive insights.



Heartflow FFR_{CT} Analysis

FFR_{CT} Analysis is a non-invasive test that provides a personalized, color-coded 3D model of your coronary arteries measuring how plaque build up may be impacting blood flow. This helps your provider understand the severity of your disease.

This test provides the most accurate³ diagnosis of CAD and is recommended by cardiology society guidelines.⁴

How It Works



Scan

Detailed images of your heart are taken with a non-invasive Coronary CT Angiogram (CCTA). If the scan shows narrowings in your coronary arteries, your provider may order an FFR_{CT} Analysis.



Measure

The CCTA images undergo advanced AI processing to generate a personalized, 3D model of your arteries.

The FFR_{CT} Analysis report will analyze any blockages and how they are impacting blood flow.



Act

With all the information in hand, your provider can make an informed choice on the best treatment path for you.